

Lyra

Firmware Updating Guide

1 Updating the Lyra firmware

As well as the Lyra Control Panel app and driver software, which are installed onto your computer during a normal software installation, the Lyra unit itself contains a program in flash memory (the 'firmware') which may need to be updated from time to time.

The latest Lyra firmware version is available on the Lyra downloads page of the Prism Sound website.

Filename and location

During software installation, the installer places a copy of the current firmware in a folder called 'Lyra' within your documents folder. The filename is 'lyra.firmware'. You probably won't ever need to use this file, since the firmware is already loaded into the unit, but it is provided as a safety measure to ensure that you can always revert the firmware if you need to.

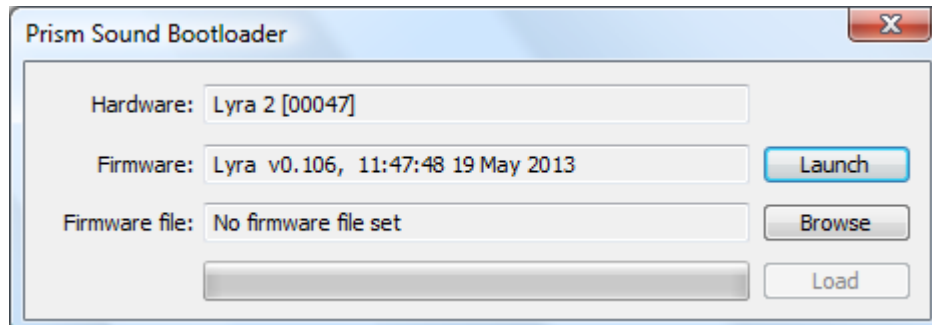
Firmware downloaded from the website will be identified by version number and date. These files can be located in the same folder as your original firmware file, or anywhere else you like.

Loading the firmware into the Lyra unit

To update the unit's firmware, you must first repower the unit whilst holding in the encoder (volume knob) and standby buttons together.

Now run the Lyra Control Panel app if it isn't already running.

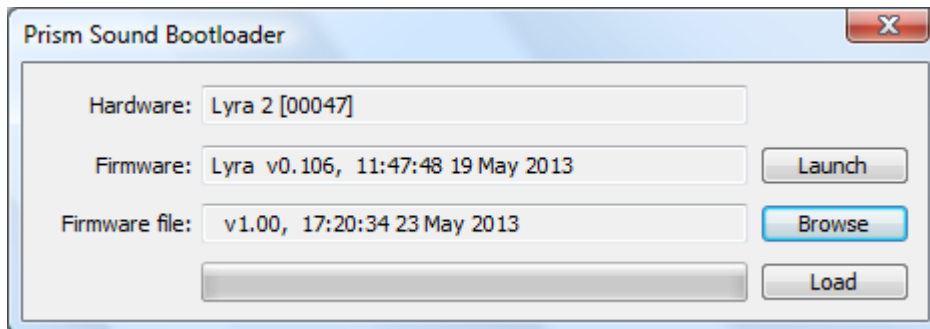
You will now see the 'Bootloader' dialogue box:



This displays the type of device and its serial number, along with the version and timestamp of the

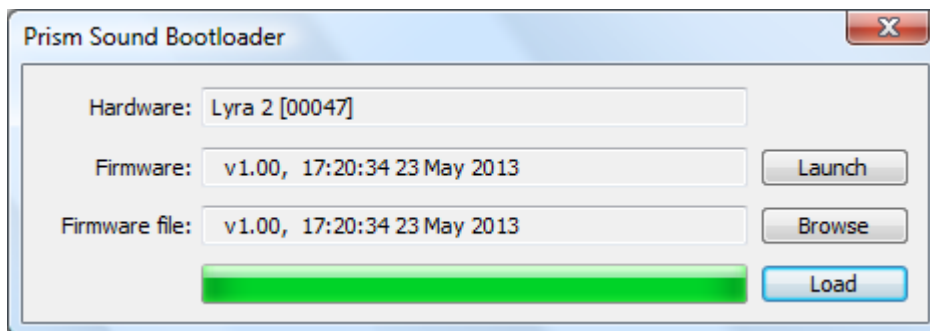
currently installed firmware.

Click the 'Browse' button and select the new firmware file to be loaded:



At this point, a warning may be issued if the selected firmware file is older than the firmware currently installed in the unit.

Now click the 'Load' button and wait for the progress bar to complete.



Finally click the 'Launch' button, which will cause the unit to reboot with the new firmware installed.

The Bootloader dialogue box will now be replaced by the usual Lyra Control Panel app.

Note that you can check the loaded firmware version at any time by hovering the mouse cursor over the unit type/serial number at the top of the Lyra Control Panel app.