

USB Audio

Firmware Updating Guide

1 Updating the USB Audio device firmware

As well as the Control Panel app and driver software, which are installed onto your computer during a normal software installation, your USB Audio device itself contains a program in flash memory (the 'firmware') which may need to be updated from time to time. This document describes the procedure for doing that, which is the same for all Prism Sound USB Audio devices (e.g. Lyra, Titan, Atlas etc.).

The latest firmware version for each device type is available on the Recording and Production downloads page of the Prism Sound website. Note that you must be sure to download the correct firmware for your product, which is identified by name and firmware version.

Filename and location

During software installation, the installer places a copy of the current firmware in a folder called 'Prism Sound' within your documents folder. The filename is of the form '<product>_<version>.firmware'. You probably won't ever need to use this file, since the firmware is already loaded into the unit on delivery, but it is provided as a safety measure to ensure that you can always revert the firmware if you need to.

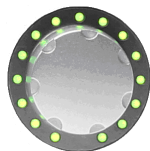
Firmware downloaded from the website will be likewise identified by device type and version number. These files can be downloaded to the same folder as your original firmware file, or anywhere else you like.

Loading the firmware into the unit

To update the unit's firmware, you must first place it in bootloader mode:

- Ensure that the USB cable is connected between the USB Audio device and your PC or Mac, and that the Prism Sound USB Audio Control Panel app is running.
- Remove power from the USB Audio device by either unplugging the power cord from the rear of the unit or else by switching off the supply to the unit at the wall socket.

- Press and hold in the encoder (volume knob) pushbutton



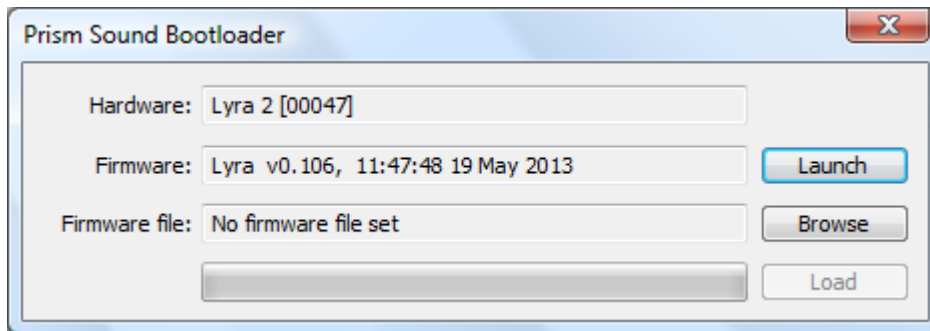
and the standby button



at the same time.

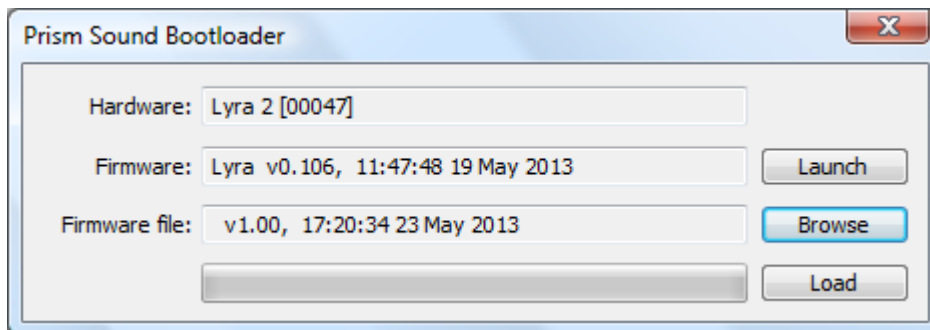
- With the buttons still held in, re-power the unit by replacing the power cord or by switching the supply on at the wall socket. Now release the buttons.
- You will notice that the LEDs on the front of the device do not come on - that is normal behaviour when bootloader mode is activated.

You will now see the bootloader dialogue box:



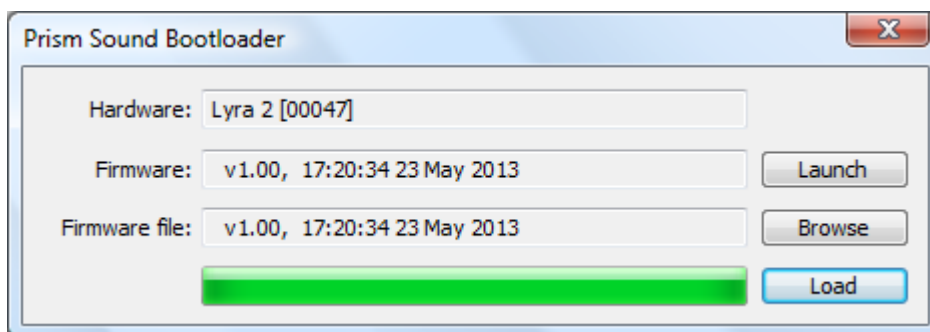
This displays the type of device and its serial number, along with the version and timestamp of the currently installed firmware.

Click the 'Browse' button and select the new firmware file to be loaded:



At this point, a warning may be issued if the selected firmware file is older than the firmware currently installed in the unit.

Now click the 'Load' button and wait for the progress bar to complete.



Finally click the 'Launch' button, which will cause the unit to reboot with the new firmware installed.

The Bootloader dialogue box will now be replaced by the usual Control Panel app.

Note that you can check the loaded firmware version at any time by hovering the mouse cursor over the unit type/serial number at the top of the Control Panel app.