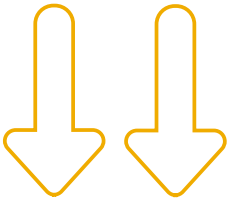


PCM4

4-CHANNEL PCM DIGITAL AUDIO WORKSTATION



The PCM4 represents the entry-level product in the new SADiE Series 5 range. With a greatly enhanced feature set and a significant increase in processing power, the affordable PCM4 is ideal for music and radio production and all general high-end editing applications.

The PCM4 utilises the new SADiE Series 5 hardware platform to meet the demand for more powerful high-speed processing of today's high-resolution audio formats up to 96kHz/24bit. In addition to the increase in processing muscle, the PCM4 features full support for real-time Direct-X plug-ins and standard Windows networking.

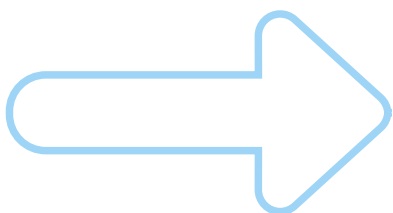
In combination with the new SADiE Version 5 software system, which offers a powerful new feature set whilst retaining the familiar SADiE user interface, the new PCM4 offers wider solutions to meet the needs of SADiE users and compete in a greater number of markets than ever before.



- 4 inputs & 4 outputs
- up to 96kHz/24bit audio
- one button PQ editing
- AIFF, WAV, BWF file support
- real-time architecture
- professional plug-ins and DirectX support
- segment based automation
- optional hardware control interface with moving fader mixing
- multitrack editing
- project management
- background recording/backup
- backup to AIT, DDS, DLT, DVD-RAM
- 50 undo levels
- sample accurate waveform editing
- 19" rack mount hardware
- easy upgrade path from SADiE RADiA
- fully supports AES-31 interchange



www.sadie.com



SADiE
DIGITAL PRECISION



K5 series

KEY FEATURES

The SADiE Series 5 PCM4 Digital Audio Workstation is a fully featured PCM editing, mastering and authoring system, designed to record, edit and process PCM audio at up to 96kHz. It is available

as a turnkey system and utilises the same Version 5 editing paradigm as other SADiE Series 5 systems.

HARDWARE

The system comprises a Pentium-based host, and a SADiE Series 5 DSP processor. The system relies on proprietary hardware for processing and audio I/O. The number of channels cannot be increased though future hardware upgrades will be made available to customers at favourable prices.

STORAGE

Storage interfaces: Any Windows compliant storage medium: IDE, SCSI 1/2/3, Firewire, Fibre channel.
Continuous recording limit: up to drive size.

SOFTWARE

The SADiE Version 5 software system runs on Windows™ 2000 or XP.

SYSTEM OPERATION

There are three main windows, comprising the Playlist Window with multiple track displays and EDL editing, the Mixer Window with full automation of faders, pans and EQs, and the Transport Window. The transport control functions and tool bars are all customisable, most functions are hotkey assignable, and custom settings can be saved per log-in account. A User Manager provides a secure multi-user environment by allowing an unlimited number of users to have designated privileges based on a password management system.

Audio representation: tape-style tracks, waveforms, events lists, source/master, numbers, labels, level meters.

Timings displayed: HMSF(Timecode), Absolute time, Sample numbers, Bars & Beats.

DIGITAL INPUTS

Each SADiE Series 5 PCM4 supports two stereo digital AES inputs.

XLR 3-pin female connectors: These signals appear on type 400 breakout cable loom transformer balanced and isolated.

- Accepts levels between 500mV and 10V peak-to-peak.
- Accepts digital protocols to S/PDIF (consumer, IEC 958) or AES (professional AES3) format, 32 - 96kHz (single wire) +/- 10%.

ANALOGUE INPUTS

SADiE Series 5 PCM4 supports 4 channels of balanced analogue input. These signals appear on type 400 breakout cable loom terminated in XLR female connectors.

- Nominal Level for peak digital audio (sine wave): +18dBu (as standard)
- Conversion: 24-bit oversampling delta sigma converters supporting sampling rates up to 96kHz

LTC AND VITC TIMECODE

Optional Input/Output

DIGITAL OUTPUTS

SADiE Series 5 PCM4 provides two stereo AES outputs
XLR 3-pin male connectors : These signals appear on type 400 breakout cable loom transformer balanced and isolated.

- Generates digital protocols to S/PDIF (consumer, IEC 958) or AES (professional AES3) format, 32kHz - 96kHz (single wire) +/- 10%, depending on software selection.

PCM4 PRELIMINARY SPECIFICATIONS

ANALOGUE OUTPUTS

SADiE Series 5 PCM4 supports 4 channels of balanced analogue output. These signals appear on type 400 breakout cable loom and are terminated in XLR male connectors.

- Electronically balanced
- Level for peak digital audio (sine wave): +18dBu (as standard)
- Conversion: 24-bit oversampling delta sigma converters supporting sampling rates up to 96kHz

SERIAL MACHINE CONTROL INTERFACE

Up to 4 channels of RS-422 machine control (optional)

RECORDING METHOD

No data compression is used. Recorded data is replayed unchanged if no processing is selected in software.

Recording Resolution: we can record 32-bit floating point words as well as 16 and 24 bit.

EDITING

The system has numerous editing paradigms designed to suit various professional audio editing and mastering disciplines, specifically CD pre-mastering, music editing and radio and speech editing. Both the Playlist and the Mixer each support 50 levels of undo/redo, and there is also a user definable automatic save function.

Fully supports 3-point and 4 point editing model.

No. of editing tracks: up to 24 PCM

Nowline locates to: markers, in/out point, next/previous segment, session start, current video position, any point in session.

In/out trimming: auditioning up to/away from, loop between markers, mark on-the-fly, zoom-in waveform, nudge, slide/reveal, audio scrub.

Segment placing: mark on-the-fly, type-in value, nudge, drag & drop, grab & slide, snap to nowline, snap to grid, sync to offset.

Sequence editing: cut, copy, delete, insert, overlay, move, lock events pre/post marker, region edit within a track, region edit across selected tracks, selective group edit

Crossfades: one-step symmetric on same track, user definable by up to 120 crossfade shapes of any length, plus crossfade fully definable using automation.

Maximum fade duration: up to length of source audio.

MIXING/DSP

Real time mixing functions can include level, surround pan, n-band parametric EQ and dynamics. Mixes can be controlled by mouse or hardware control surface.

Internal level control: static track, track envelope, dynamic track, static segment, segment envelope, dynamic segment.

Plug In support: numerous custom plug ins plus full DirectX support.

Internal submixing: PCM in real-time.

Audio processing: PCM real-time or faster.

NETWORKING

Standard Windows™ 2000 / XP based networking.

Via network: data transfer, non real-time audio file transfer faster than real-time audio transfer.

COMPATABILITY

EDL/project files: [read directly] SADiE3, SADiE4

Ability to save projects, EDL's, clipstores and mixers to SADiE4.2 format

AES-31 interchange included as standard in Series 5.

(NORMALLY SUPPLIED AS TURNKEY UNIT)

230Vac or 110Vac 50-60 Hz, switch selected.

IEC line connector.

Steady-state power requirement < 300 W

Fuse: 5 Amp (T)

COMPLIANCE

SADiE Series 5 PCM4 case is CE marked.

Conforms to the following standards:

EN50081-1 (EN55022); 1995

EN50082-1 (EC 801-2,3,4); 1992

Following the provisions of the Low Voltage and EMC Council Directives:

73/23/EEC

89/336/EEC

MECHANICAL

SADiE Series 5 PCM4 turnkey: 19" rack mounting chassis 4U

Max dimensions: 485mm wide x 550mm deep x 178mm high.

Combined mass: < 20kg

E & OE

United Kingdom

SADiE UK

The Old School,
Stretham Ely, Cambs.
CB6 3LD. UK

Tel: +44 (0)1353 648 888

Fax: +44 (0)1353 648 867

Europe

SADiE GmbH

Villa Leinen,
Kollwitz Strasse 16,
73728 Esslingen. Germany
Tel: +49 (0)711 3969 380
Fax: +49 (0)711 3969 385

USA

SADiE Inc.

475 Craighead Street,
Nashville. TN 37204
USA
Tel: +1 615 327 1140
Fax: +1 615 327 1699

