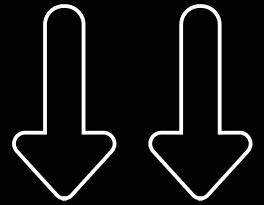


BB2

Portable 2-channel SADiE

series
K5



The unique and innovative **SADiE BB2** addresses the growing need in the broadcast industry for a fully professional yet simplified product suited for smaller scale editing and recording tasks and fast turn-around packages. Utilising a USB2.0 interface and incorporating a newly designed powerful DSP sub-system, it can be added to any modern Laptop or Desktop host PC running Windows® XP.

Designed into a stylish injection moulded plastic box, the easy to install and fully portable SADiE BB2 provides an innovative solution for all broadcasters.



The SADiE BB2 is available as standard with a radically simplified user interface, making it very intuitive to learn and use. This interface is concentrated into a single window and allows the recording and editing of up to 8 tracks with level and pan controls, transport, clip selection and master output level controls, all accessible from within this one window. Normal cut/copy/paste routines and both the familiar SADiE playlist and region editing functions are incorporated.

Based on the design of the SADiE BB2, the **BB2-J** version combines the audio i/o capability of the BB2 with a fully functional Jog Wheel controller and assignable function buttons. Further versions such as the **PCM2** are based on the BB2-J hardware and feature full SADiE V5 software functionality.

SADiE

BB2

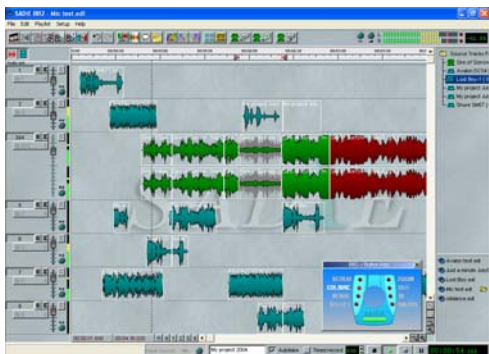
Portable 2-channel SADiE



- fully portable 2-channel device for radio broadcast applications
- USB2.0 connected editing processor
- newly designed powerful integral DSP system
- optimised for use with laptop or desktop host Windows® XP system
- simplified SADiE editing interface
- single window recording & editing
- 8 tracks with level controls, transport controls, clip selection and master output levels
- normal cut/copy paste and both playlist and region editing functions

Designed primarily to address the needs of the radio broadcast market, the **SADiE BB2** is available as standard with a radically simplified user interface, making it very intuitive to learn and use.

Based on the design of the **SADiE BB2**, the **BB2-J** version combines the audio i/o capability of the BB2 with a fully functional Jog Wheel controller, to reduce the risk of RSI (Repetitive Strain Injury) exacerbated by constant use of a mouse in editing operations.



- full interchange options with other systems
- stereo analogue input
- stereo analogue output
- stereo SIPDIF input
- stereo SIPDIF output

United Kingdom SADiE UK

The Old School,
Stretham Ely, Cambs.
CB6 3LD. UK

Tel: +44 (0)1353 648 888

Fax: +44 (0)1353 648 867

Europe SADiE GmbH

Gänsäckerstr. 11
73730 Esslingen. Germany

Tel: +49 (0)711 3969 380

Fax: +49 (0)711 3969 385

USA SADiE America

1650 Murfreesboro Road
Suite 206

Franklin, TN 37067

USA

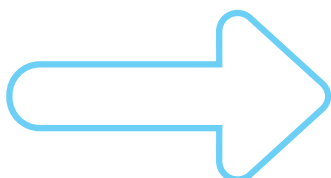
Tel: +1 615 327 1140

Fax: +1 615 327 1699

Full interchange with other more powerful **SADiE Series 5** systems, in addition to other manufacturer's equipment, is provided to allow projects to be migrated to larger systems when required.

Uniting the advantages of the compact design of the BB2 with the convenience of an integrated weighted jog wheel controller and associated function buttons, the SADiE BB2-J provides an ergonomic and user-friendly editing system solution that can be quickly and easily added to any modern laptop or desktop PC .

Further versions such as the **PCM2** and **PCM2-24V** for video post are based on the BB2-J hardware and feature full SADiE V5 software functionality.



SADiE
DIGITAL PRECISION

www.sadie.com

