



## Notes on using multiple dScope versions

These notes describe how to set up your folder structure so that it is possible to switch between different versions of dScope quickly and easily.

### Overview

Once you have installed a version of dScope, the dScope installation folder contains certain versions of program files which relate to the version that has been installed. To change the version of dScope software, it is not necessary to completely un-install the current version and re-install a different version. Normally, for upgrading the software version, all that is necessary is to install the newer version "over the top" of the existing version. However, should you wish to be able to switch back and forth between several different versions of software, the notes here will tell you how to do this.

### Background

For any particular dScope version, there are a range of files that are needed to run that version. If we know which ones these are, we can replace them all with other versions in order to change the version of dScope software that we are running. To make this an orderly and controlled process, we can make sub-folders of the dScope installation folder that contain all the necessary files for a particular version and a batch file that will copy them to the right locations when we wish to use them. We can have as many of these folders as we like, and can switch between versions of installed software in seconds.

For the purposes of this discussion, we will assume we have dScope version 1.11 installed in the default location and we wish to try a beta of version 1.20, but be able to switch back if necessary. Initially, all the files we are using will have been installed in

C:\Program Files\Prism Sound\dScope Series III\

These files include:

- the main dScope executable, (DScope.exe)
- a series of Dynamically Linked Library files (DLLs) which contain libraries of code necessary for dScope to operate
- Some binary files for the dScope DSPs
- Compiled help files (CHM and CHW) which provide the online help

In addition, there are a couple of files not in this folder, but needed for dScope to work. These are dsloader.sys and dsusbdrv.sys which are a couple of USB drivers in a sub-folder of the C:\WINDOWS folder. If you are using Windows 98 or Windows ME, these will be in the C:\WINDOWS\system folder. If you are using Windows 2000 or Windows XP, these will be in the C:\WINDOWS\system32 folder. (Windows 95 and Windows NT don't support USB and can't run dScope).

To run a different version of dScope, we simply have to replace the files listed above with the required versions.

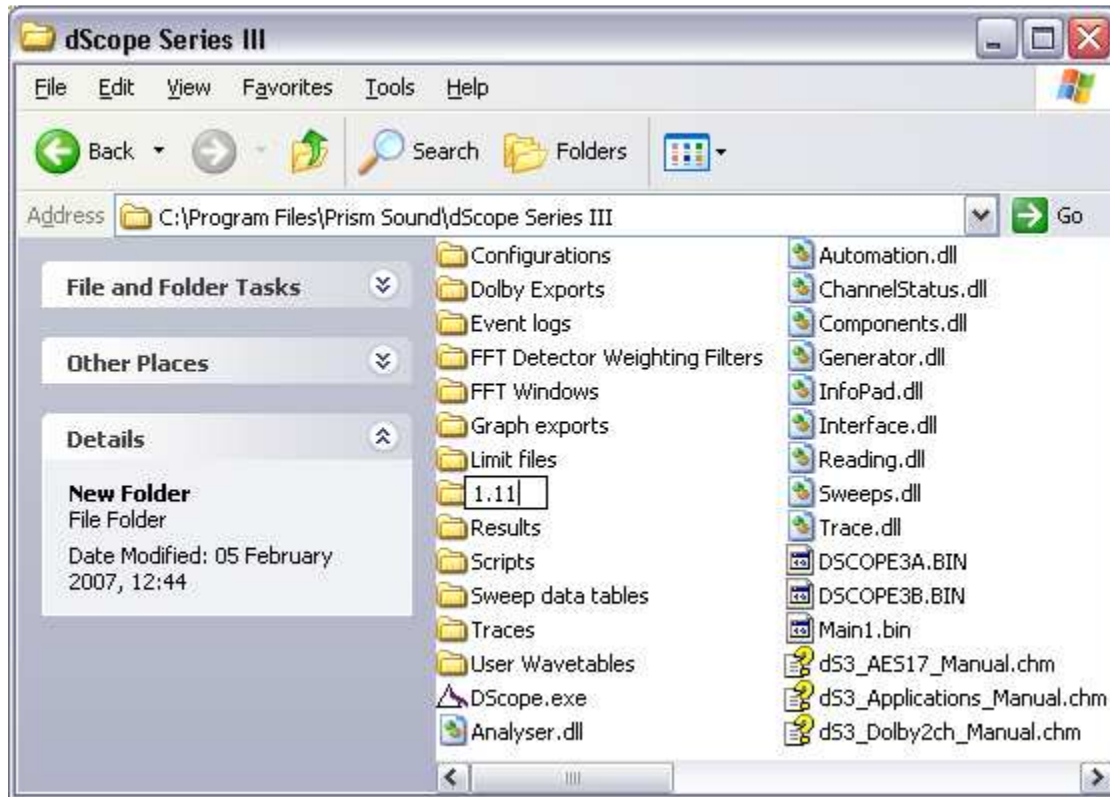
**Continued:**



## Step by Step instructions

### Create a new folder for the current files

In the C:\Program Files\Prism Sound\dScope Series III\ folder, create a new folder with the name of your current installation version (in the example here, this will be called 1.11 so you will now have a path called: the C:\Program Files\Prism Sound\dScope Series III\1.11) See the screen-shot below:



### Copy the currently used files to this folder

From the dScope Series III folder, copy all the files with these extensions to the folder you have just created:

- BIN
- EXE
- DLL
- CHM
- CHW

(Most of these are visible in the screen shot above)

From the C:\WINDOWS\system (for Windows 98 or ME) or C:\WINDOWS\system32 folder (for Windows 2000 or XP), copy ONLY

- dsloader.sys and dsusbdrv.sys

**Continued:**



### Create a batch file to copy the files back where they are wanted

A batch file is a small program written in plain text that we are going to use to automate the process of copying the files to the correct locations when we wish to use them. Open Notepad (usually in Start -> All Programs -> Accessories) and create a new file. Copy the text below into Notepad:

```
Echo off
cls
echo This will copy the dScope files in this folder into
echo the relevant working folders.
echo _____
echo Please make sure the dScope is switched off, or the
echo USB drivers etc. will not be copied correctly.
echo Press Ctrl-c to abort or
pause

copy *.bin ..
copy *.exe ..
copy *.dll ..
copy *.chw ..
copy *.chm ..

if "x%OS%" == "xWindows_NT" goto WinNT

@echo Detected Windows 98/Me;
echo copying Sys files and ScriptDlg to 'System' directory

copy *.sys %windir%\system

Rem Comment out the next two lines if there is no ScriptDlg.DLL in folder
copy ScriptDlg.dll %windir%\system
regsvr32 %windir%\system\ScriptDlg.dll

goto End

:WinNT

@echo Detected Windows 2000/XP;
echo copying Sys files and ScriptDlg to 'System32' directory

copy *.sys %windir%\system32

Rem Comment out the next two lines if there is no ScriptDlg.DLL in folder
copy ScriptDlg.dll %windir%\system32
regsvr32 %windir%\system32\ScriptDlg.dll

:End

Pause
```

Save the file with the name "This.bat" (the name is not important, but the "bat" extension is).

### Repeat the process for other versions you wish to use.

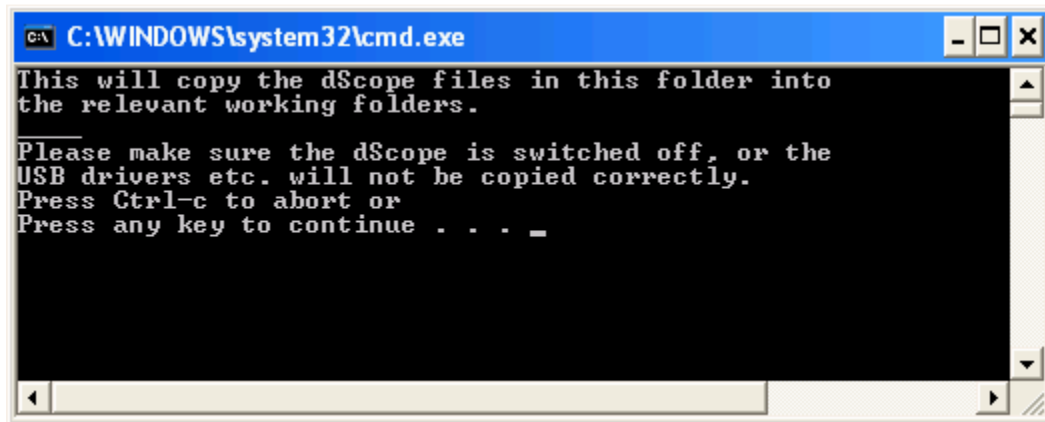
You can create as many folders as you like containing different versions of dScope files. Sometimes you will need to install a new version of dScope and copy the files in the same way as above, and sometimes the folder with the required files can be downloaded from the Prism Web site (particularly for special and beta releases).



## Changing Versions

Changing the version of dScope installed consists of the following:

- Exit the dScope software (if it is running)
- Turn off the dScope hardware using the switch on the back panel
- Run the batch file "This.bat" in the folder containing the version you wish to install by double clicking on it. This will bring up a command prompt screen with instructions as shown below. Press enter to proceed at each point and to exit at the end of the procedure:

A screenshot of a Windows command prompt window. The title bar reads "C:\WINDOWS\system32\cmd.exe". The window contains the following text:

```
This will copy the dScope files in this folder into  
the relevant working folders.  
  
Please make sure the dScope is switched off, or the  
USB drivers etc. will not be copied correctly.  
Press Ctrl-c to abort or  
Press any key to continue . . . _
```

## Additional Notes

### ScriptDlg.DLL

Some scripting tasks make use of a file called ScriptDlg.DLL which is also in the C:\WINDOWS\system or C:\WINDOWS\system32 folder. This is used to create dialogue boxes, buttons, drop-lists etc from scripts. It is best to keep using the most up-to-date version available. Although you can put it in the version folders and it will get copied to the right location, it may cause complications if you go back to an earlier version and have scripts that depend on features of a newer version. Our recommendation therefore is not to keep a copy in the older version folders, but to use the newest version available.

### Toolbar issues

Different versions of dScope software can have significantly different toolbar options as new features introduce new buttons. Sometimes changing between versions, particularly changing from newer to older versions, will force the toolbar to reset to the default. Other times you may end up with a toolbar with missing icons, particularly when changing from an older version of dScope to a newer one. If this is the case, you can reset the toolbar by going to the "Utility Menu" and selecting the "Customize toolbar" option. In the dialogue box that appears is a "Reset" button. Clicking this button will reset the toolbar to the default settings for that version of dScope software.